

NEW MANHATTAN

Francois Champsaur



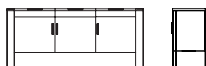
NEW MANHATTAN combines modern and convenience in a distinctive sideboard. Its metal legs, exclusively designed for this collection, serve as both functional and decorative elements. They contrast elegantly with the wooden body of this magnificent piece.

STRUCTURE

Frame and handles in epoxy metal, structure in veneer on particles board, no shelf inside, with three drawers on top

FINISHING

Frame in dark grey epoxy paint, structure in natural walnut or stained oak



SIDEBOARD NO142

1680*450*820mm
66.1*17.7*32.3"

2200*450*820mm
86.6*17.7*32.3"

HC28